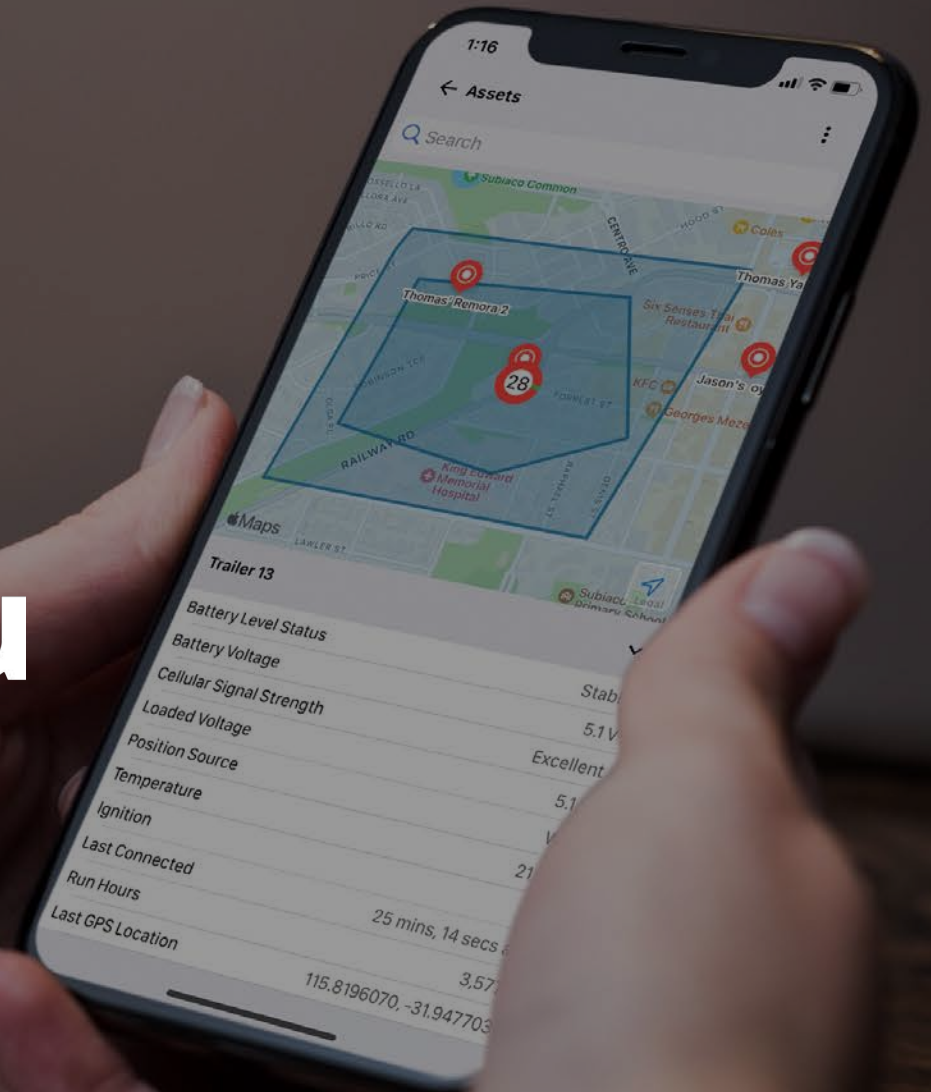




telematics!guru

FEATURE OVERVIEW



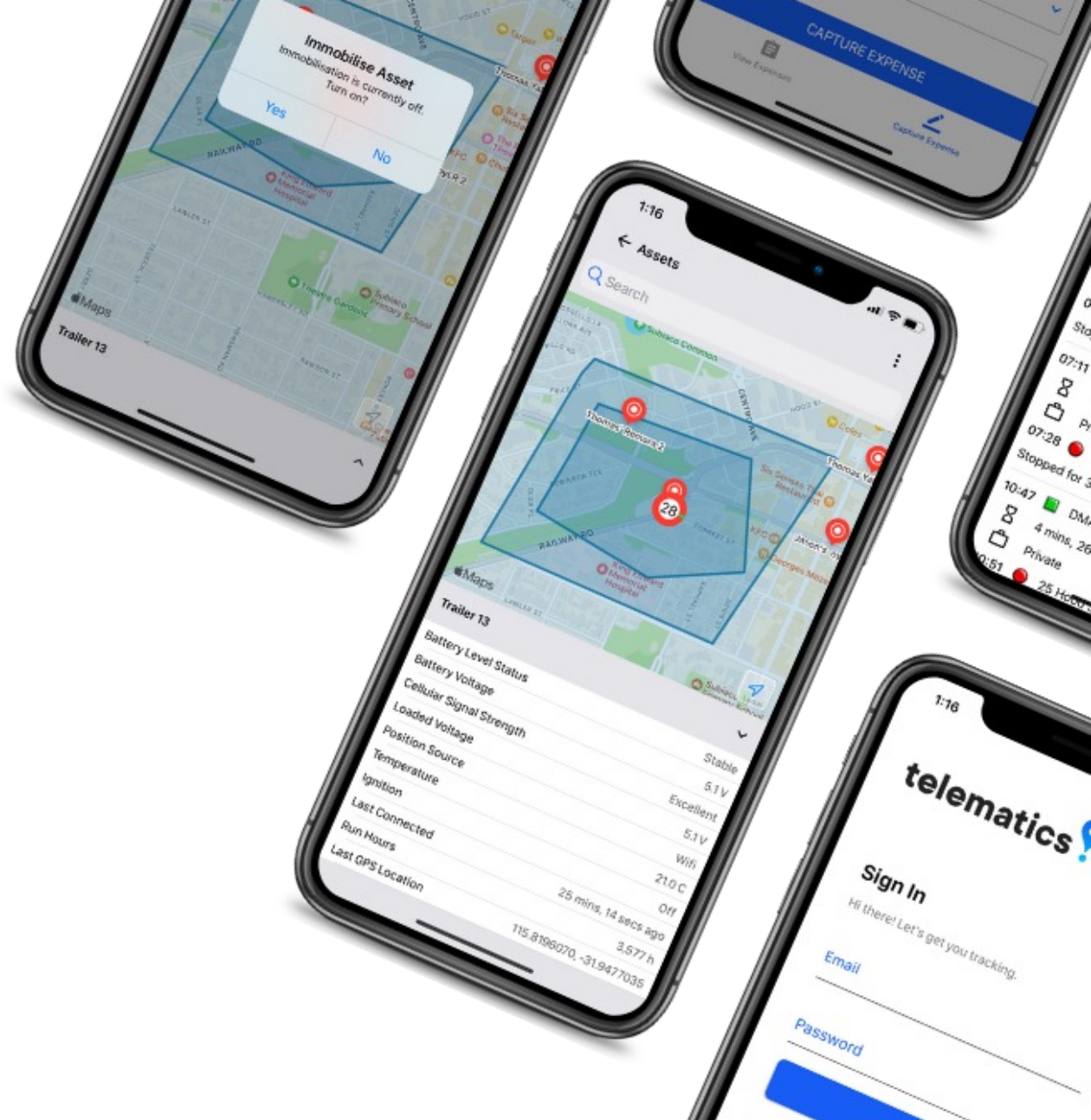


One Platform, Every Asset

Telematics Guru is Gofinder's deployment-ready IoT asset tracking platform designed to work out-of-the-box with all Gofinder hardware.

Feature-rich and flexible, **manage all your powered and non-powered assets in one platform** with location and movement tracking, asset utilisation management, customisable alerts and reporting, and more!

Telematics Guru can also be rebranded for a full white-label GPS tracking solution.



Location and
Recovery

Reporting and
Alerts

Safety and
Compliance

Flexibility and
Control

Billing

Support

Security

Track and Manage Your Assets



Location Tracking

Locate your assets in Google's Map, Terrain or Satellite Views



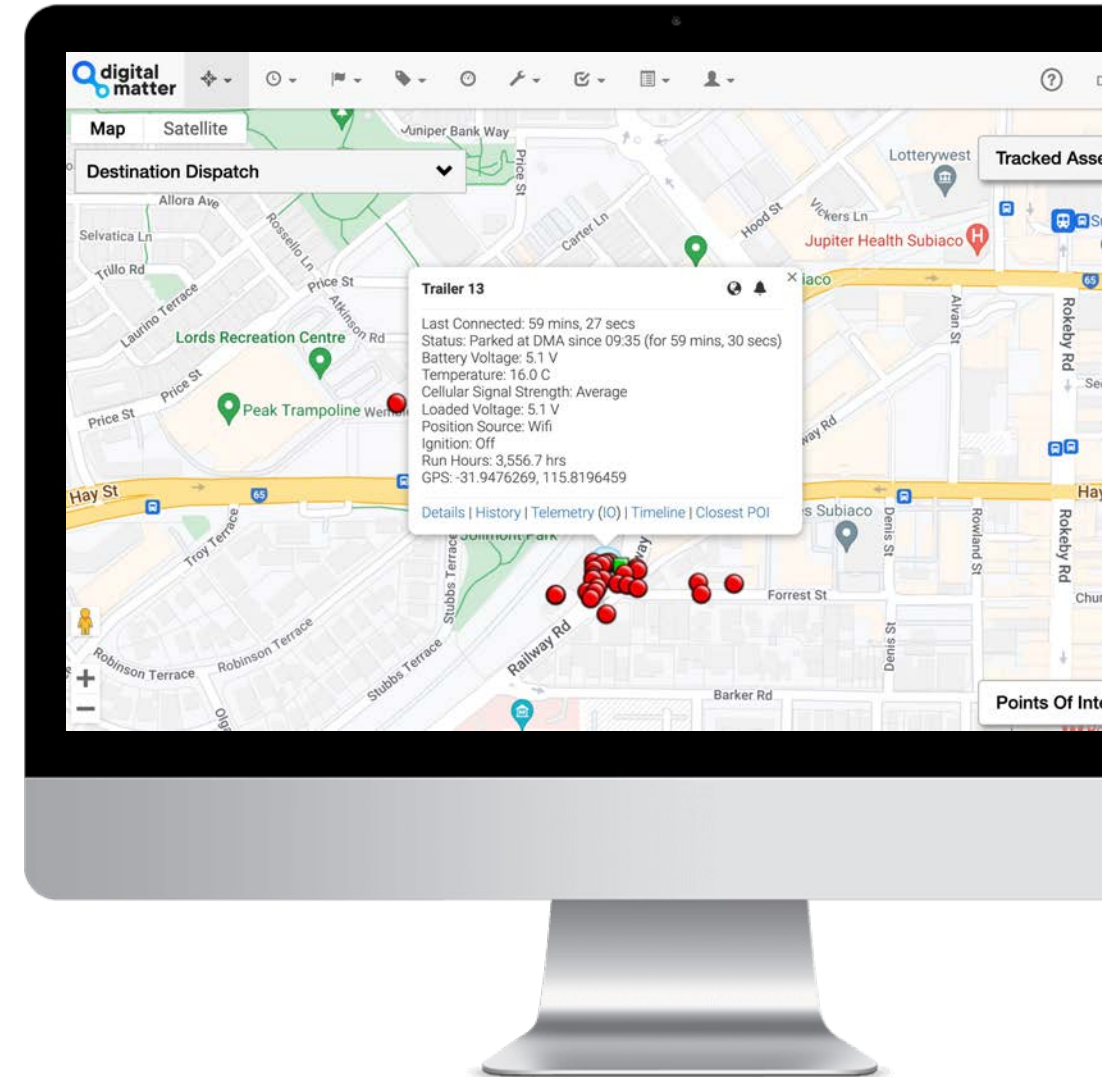
Trip History

Capture and view historical trip data to monitor routes, mileage, idle time, average speed and more



Colour and Customise

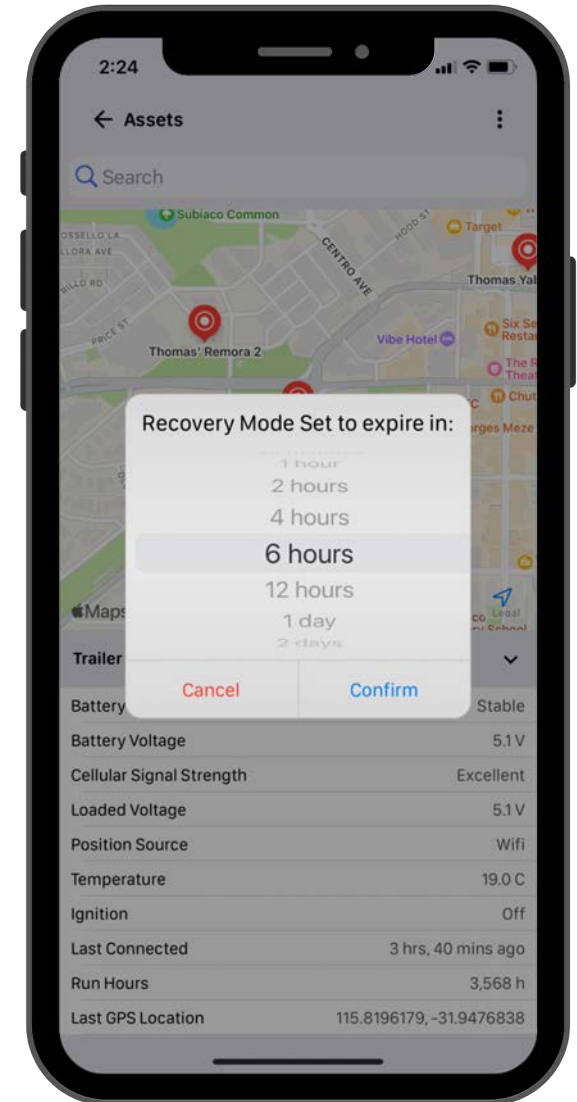
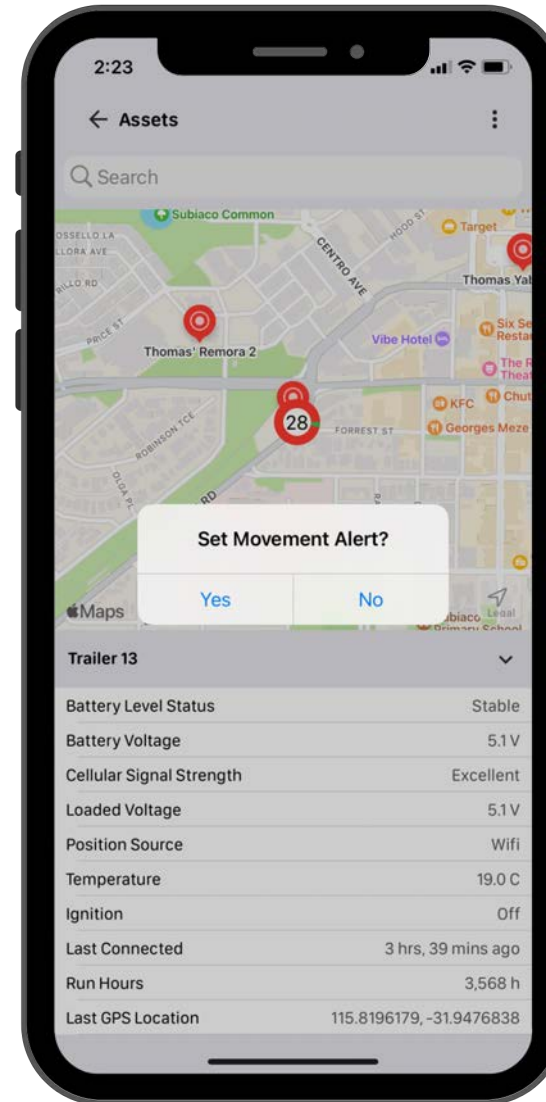
Customise the view of your assets on the map based on Input States (engine on, pump on, etc.) to quickly identify asset usage or behaviour

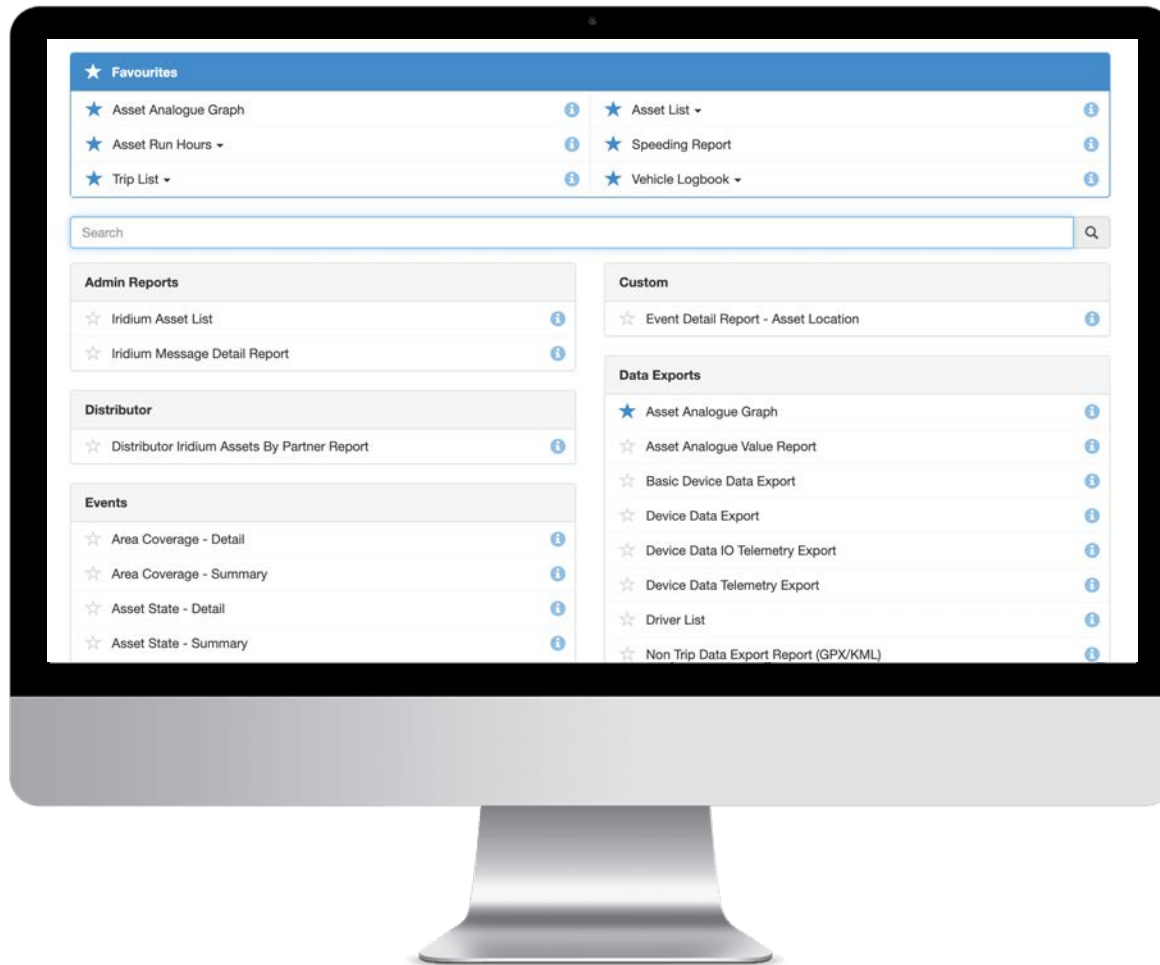


Set Movement Alerts and Recovery Mode

Set Movement Alerts to receive push, email, or SMS notifications if movement is detected.

Quickly switch to Recovery Mode to activate real-time tracking in case of loss, theft or unauthorised use.





Reporting and Alerts for Smarter Asset Management

Explore, customise, schedule and download vital reports for analysis, optimisation and billing. Select from common reports such as **Asset Utilisation**, **Trip List**, **Low Battery**, and **Speeding**, or create your own.



Location and
Recovery

Reporting and
Alerts

Safety and
Compliance

Flexibility and
Control

Billing

Support

Security

Configure Actionable Alerts

Set notifications based on exceptional events and specific asset behaviours.



After Hours Movement



Impact Detected



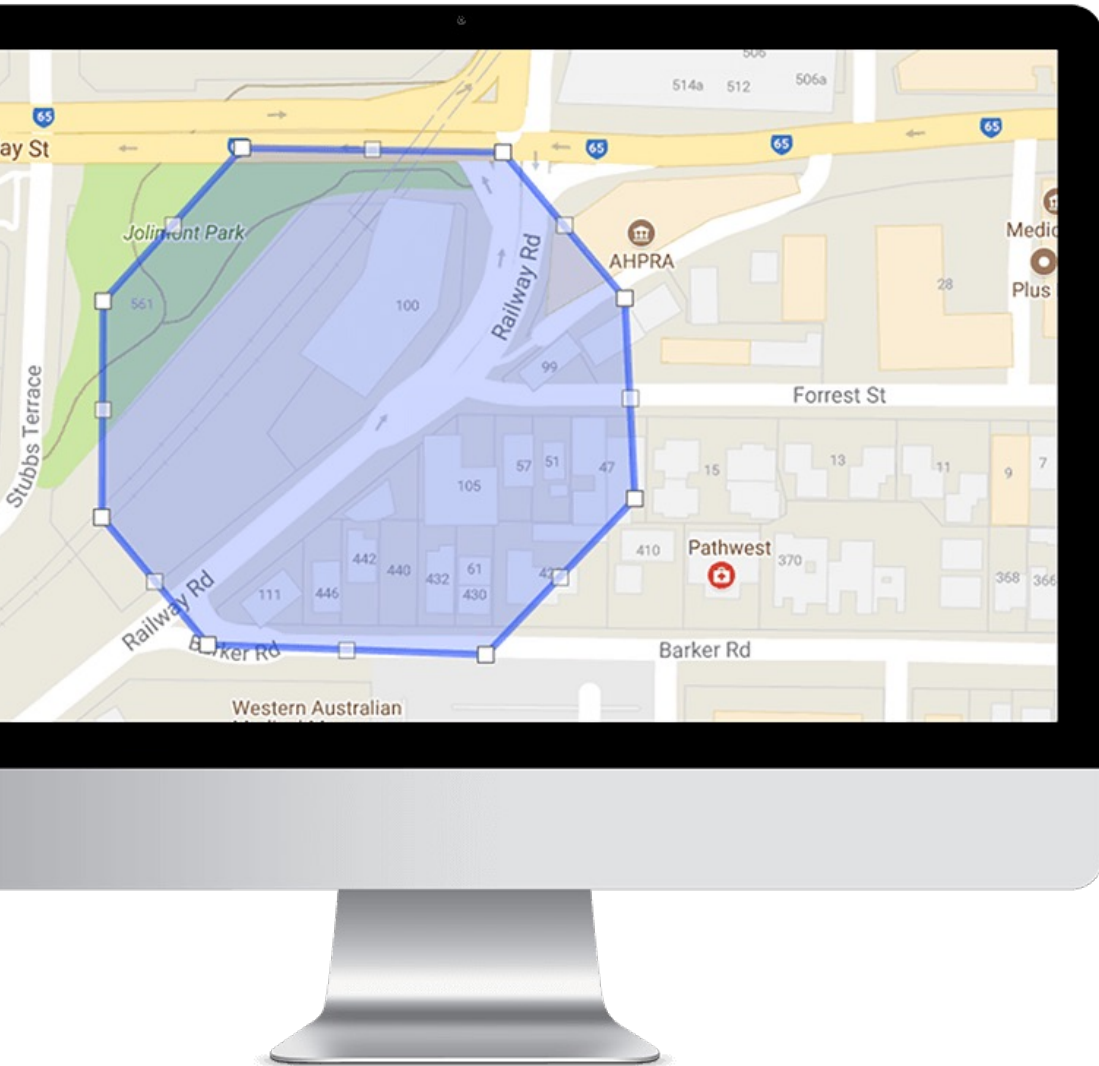
Speeding Alert



SOS / Duress

The screenshot shows a 'Create Alert Wizard' window with a dropdown menu for 'Type of Alert'. The dropdown is open, displaying a list of alert types. The first option, 'After Hours Usage', is highlighted in grey. The other options are listed below it. The 'Remora Low Battery' option at the bottom is highlighted in blue.

Type of Alert
After Hours Usage
Ignition On
Movement Detected
Panic / Duress Button Pressed
Accident / Rollover Detected
Speeding (Once per trip)
External Power Removed
Low Device Backup Battery Voltage
Low External Voltage (Vehicle Battery Voltage)
Geo Fence Alert
Remora Low Battery



Set Boundaries and Points of Interest

- Create “Digital Boundaries” with user-friendly Geofencing tools
- Quickly find assets near user-defined Points of Interest
- Capture data such as Time in Geofence, Date of Entry and Exit, and configure alerts if an asset enters or leaves your boundary
- Upload multiple Geofences with your own longitude, latitude, radius and priority data
- Advanced [Geofence Download to Device](#) options to manage location-based device behaviours



Visualise Asset Utilisation

Quantify asset **working time versus idling time** to improve profitability. Understand where, and how your assets are being used to optimise usage, reduce downtime, and increase asset's useful life.



Location and
Recovery

Reporting and
Alerts

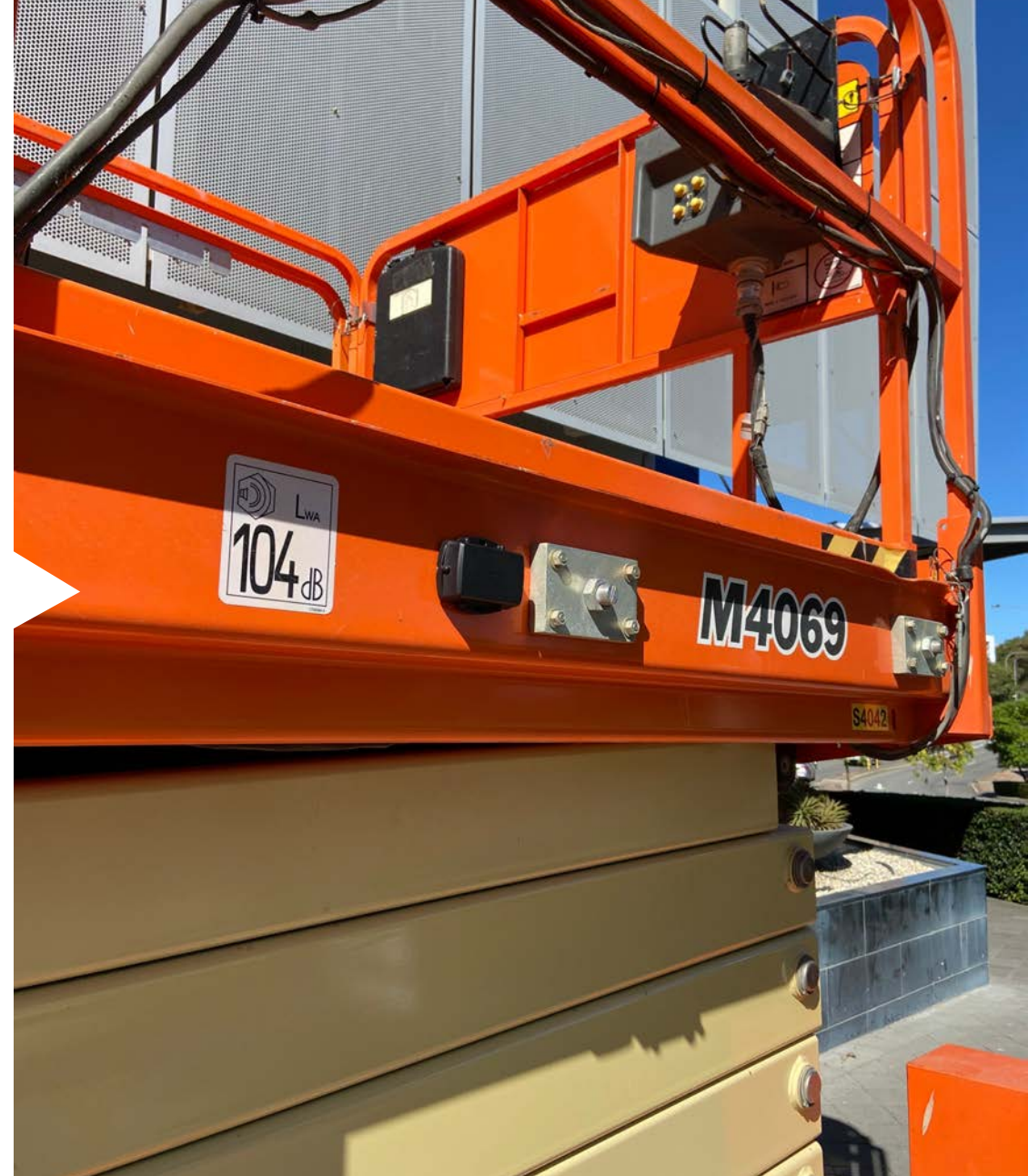
Safety and
Compliance

Flexibility and
Control

Billing

Support

Security



Monitor Sensor and Asset Condition Data

Report on sensor and Bluetooth® accessory data such as temperature, humidity, tank levels, door open/close, and more, and set threshold alerts.



Pallet 1: Humidity 86%



ELA T Tag: 38°C



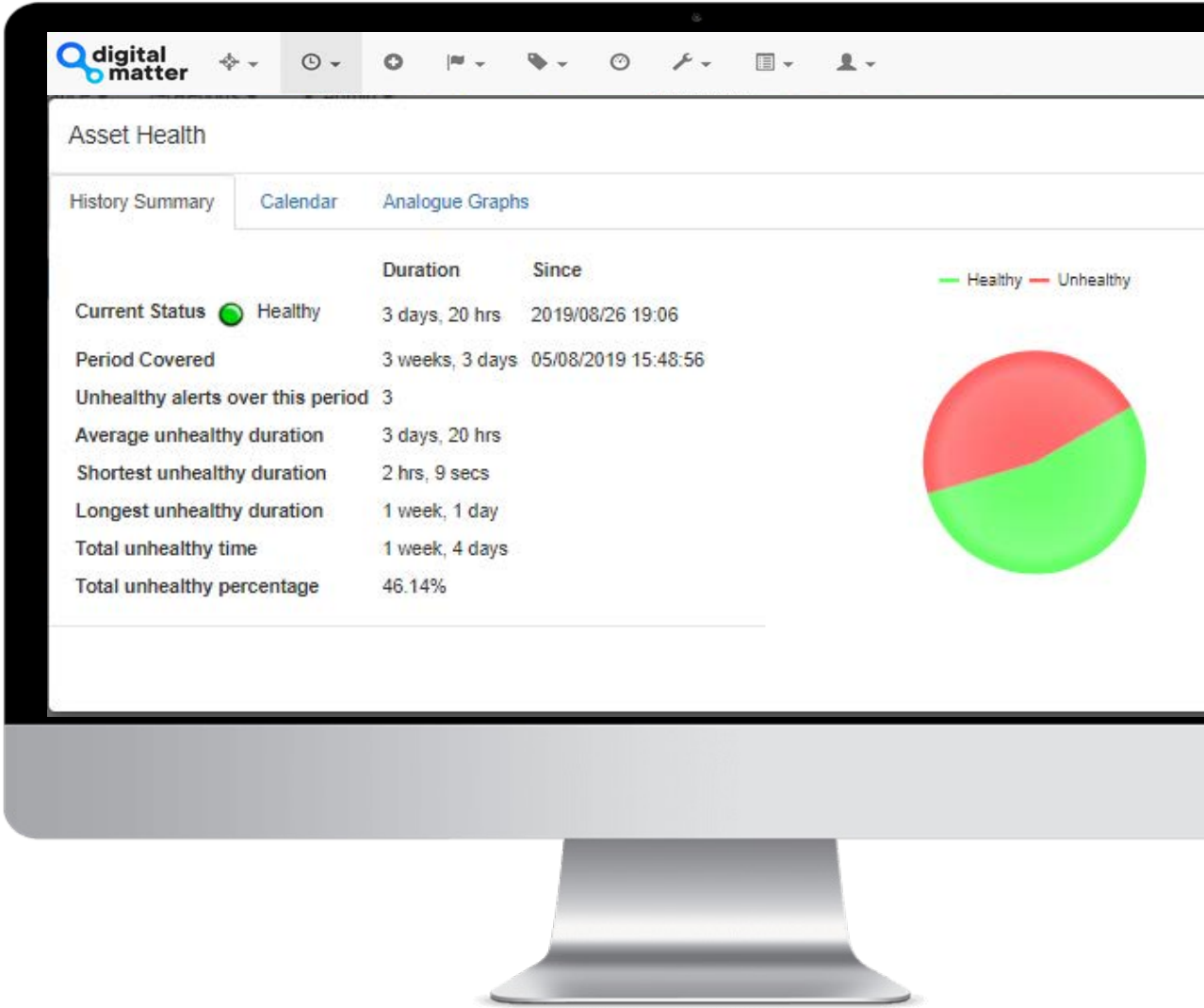
Tank Level: 98.6%



Configure and Manage Asset and Device Health

See “healthy” and “unhealthy” assets at a glance based on sensor data and user-defined events or behaviour, such as temperature changes, tank levels, humidity, pressure, and more.

Ensure your assets are never left unprotected due to dead batteries with **Battery Low** and **Battery Critical** alerts.



Safety and Compliance

Vehicle, Equipment, and
Fleet Management Solutions



Location and
Recovery

Reporting and
Alerts

Safety and
Compliance

Flexibility and
Control

Billing

Support

Security

Manage and Monitor Driver ID

- Collect and manage Driver ID details via iButton, RFID, Wiegand and more to prevent unauthorised access to assets
- Permanently assign drivers to assets, or manually assign drivers to a trip to enhance driver behaviour monitoring, access control, and log booking



Monitor Driver Behaviours

Monitor speeding, harsh acceleration, braking and cornering, idle times and more to improve driver safety, maintain compliance, and prevent unnecessary wear on vehicles.



Excessive Idling



Speeding Alert



Seatbelt Not Used



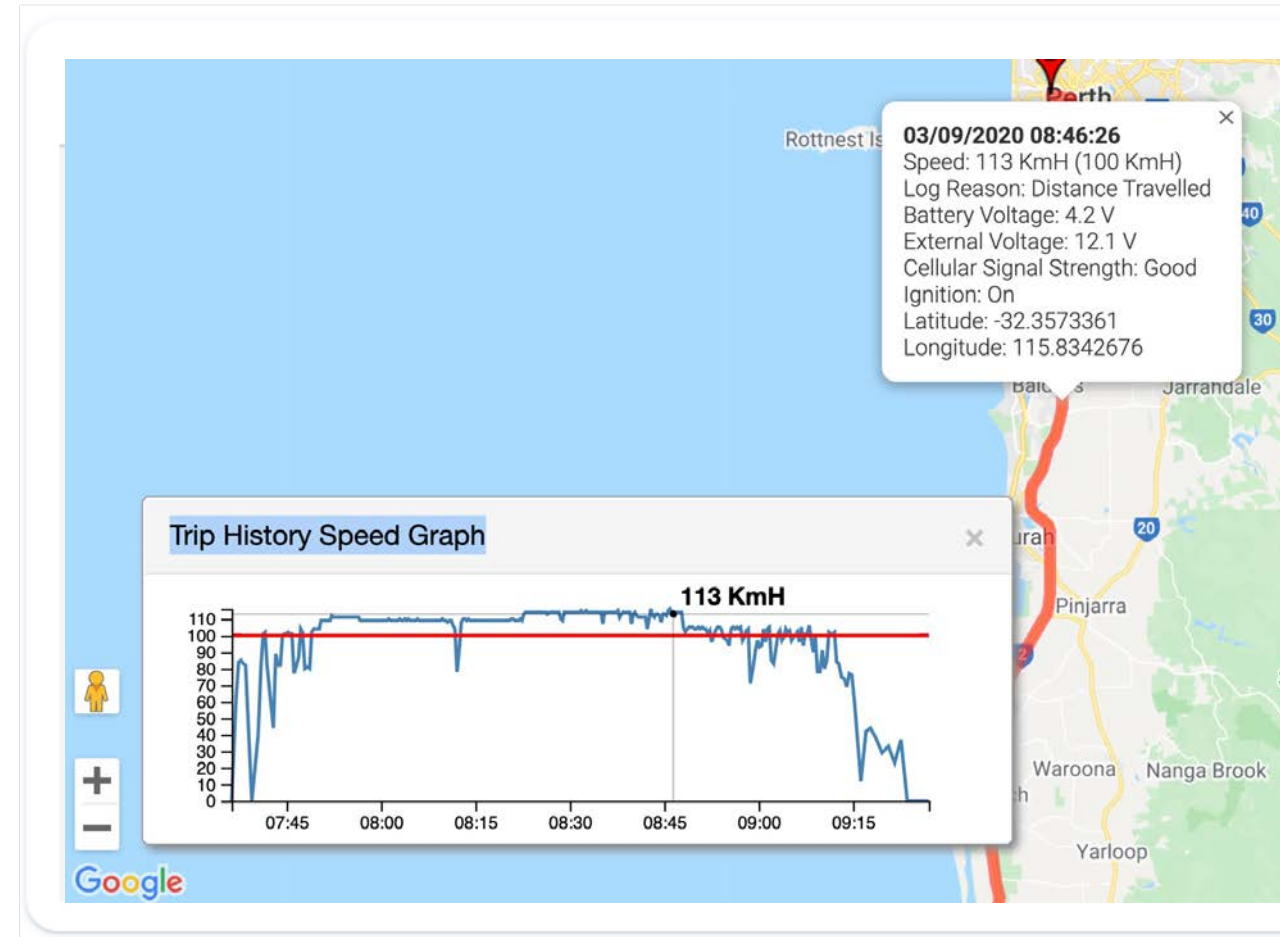
SOS / Accident Alert



Harsh Acceleration



Driver Fatigue



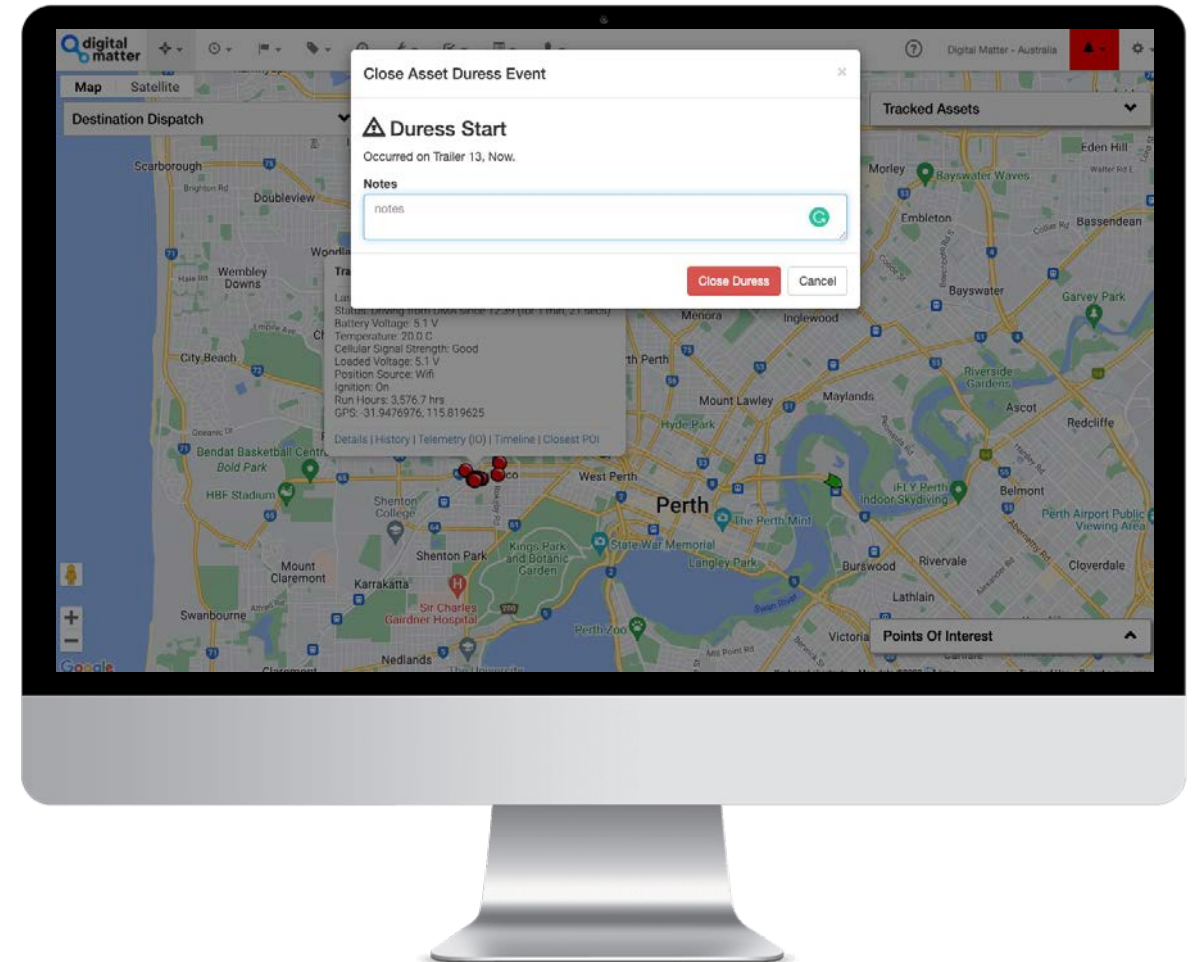
Incident Detection, Alerts and Reporting

Configure SMS, email, and in-platform alerts if assets exceed a roll-threshold or are involved in an accident (based on sudden speed changes) to improve safety and compliance.

Important

Accident detection is developed using verification from field data, national crash tests and data published in research. However, large vehicles or equipment with thin shells and varying suspension quality may experience changes in velocity that may be difficult to separate from harsh driving or operating on unsealed terrain. The system should be used with caution with an understanding of the practicalities of accident detection.

Alert latency is dependent on several factors including device type, connectivity, coverage, and more.



Schedule Preventative Maintenance and Job Reminders

Avoid costly repairs and reduce equipment and vehicle downtime with timely Maintenance Alerts and Job Reminders based on time, distance travelled, or run hours.

10km

6mth

50hr

Create Maintenance Schedule

i The **Maintenance Schedule** dictates **when** the next maintenance job will be actioned. Not all the conditions are **combination of criteria** (Odometer, Run Hours, Secondary Run Hours and Calendar) can be used. Whichever of the **first** will result in a maintenance job being created for the asset.

☐ Secondary Unit Maintenance **i**

☒ **Odometer**
☒ Use Absolute Value **i**
Action Interval (kms)

Reminder Notice Period (kms before action) (

☐ Run Hours

☐ Calendar

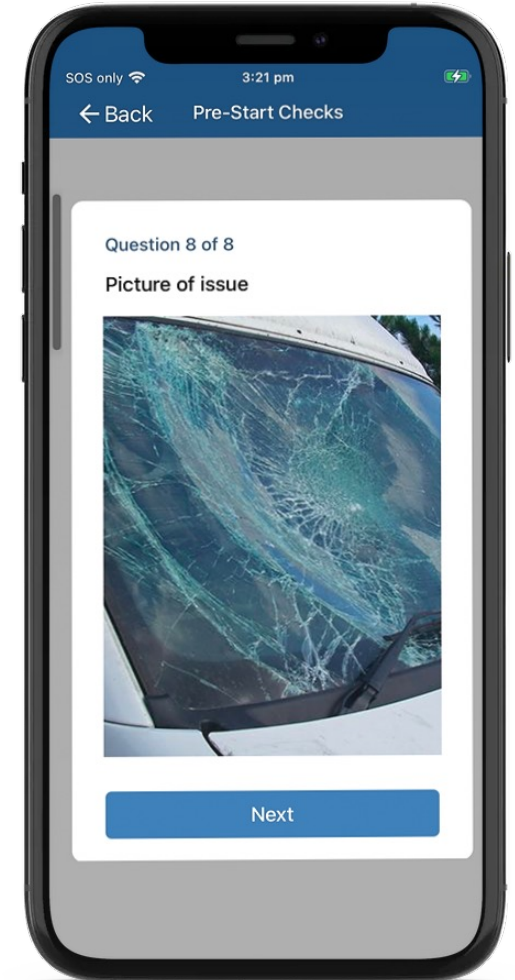
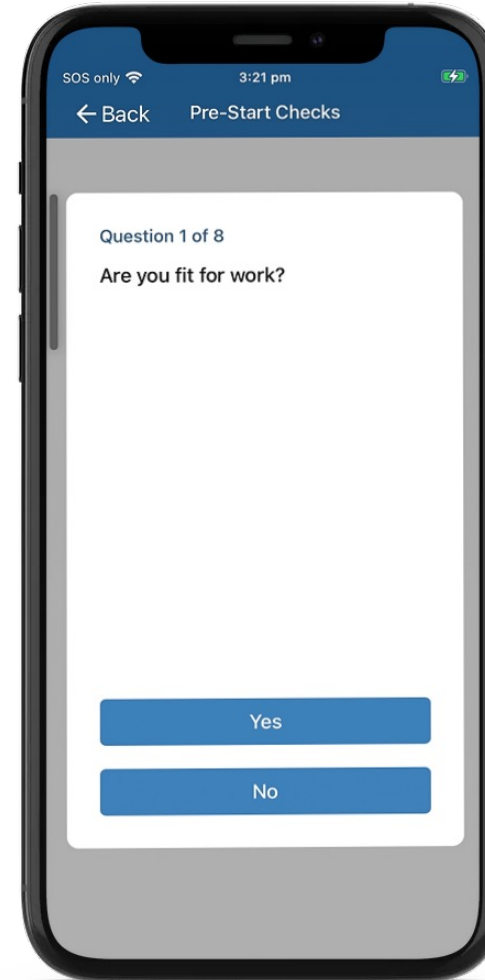
Back

Create Checklists

Pre-Start Checks, Proof of Delivery, On Hire/Off Hire, and more

Checklists in Telematics Guru allow users to customise a series of questions, or checks, that must be completed by operators.

Checklists can be used in many applications: mandatory pre-start checks, regular inspections, incident reports, proof of delivery (using photos), equipment checks, and more!



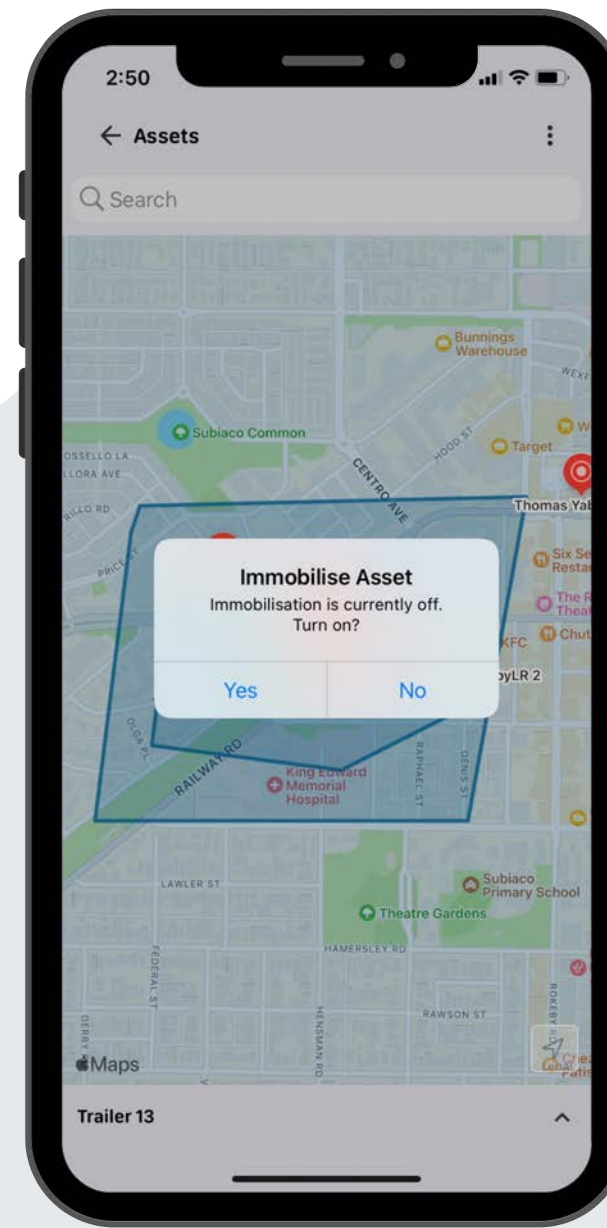
Create and Maintain Asset Maintenance Lists

- Quickly capture maintenance items against your asset (broken mirror, missing equipment, etc.) to collate and action repair tasks
- Reduce downtime onsite by ordering and efficiently scheduling required maintenance items
- Access entire asset maintenance history for record keeping and reporting



Immobilise Vehicles or Equipment

Safely and remotely disable vehicles or equipment with One-Touch Immobilisation (requires device with immobilisation support and installation).



Manage Deliveries and Dispatches

Utilise Destination Dispatching to enable simple transportation, job, or delivery dispatching to improve driver management, visibility, and productivity.



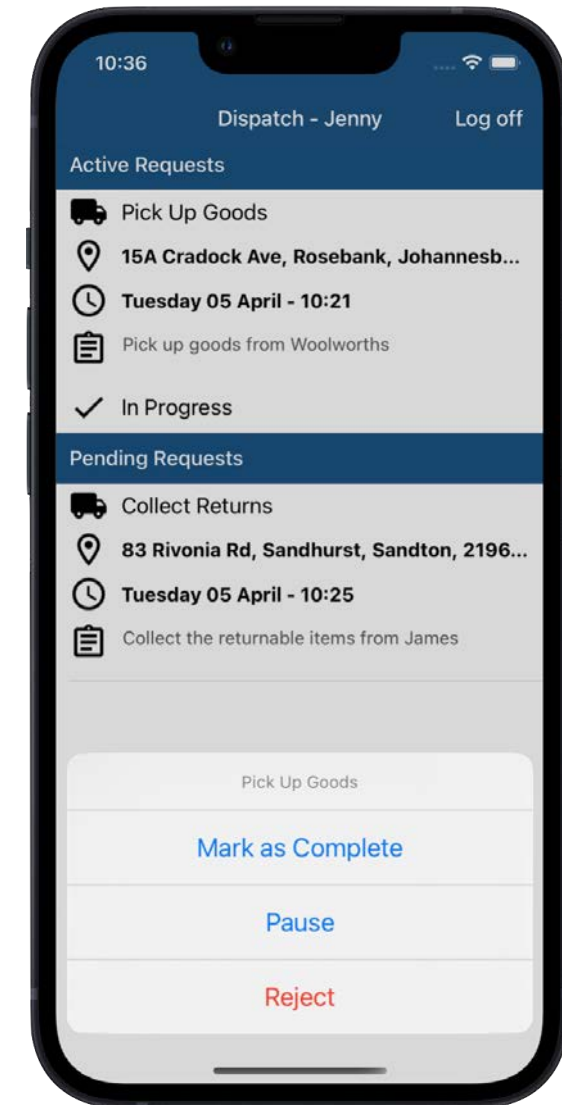
Assign - Managers can quickly assign and send jobs or deliveries with addresses to drivers.



Receive - Dispatch requests are received in the form of push notifications on the Telematics Guru Mobile App. The driver can accept, pause, or reject the dispatch request and, if accepted, begin navigating to the assigned destination.



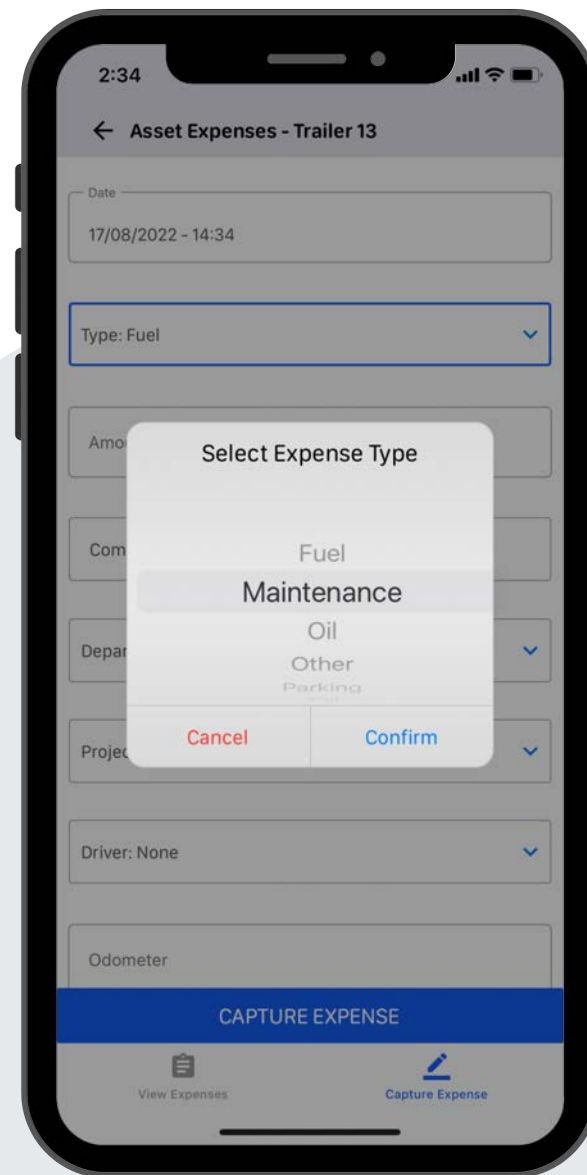
Deliver - Once the delivery or job is completed, the driver marks the dispatch as completed and can continue with additional dispatches or sign out.



Capture Expenses On The Go

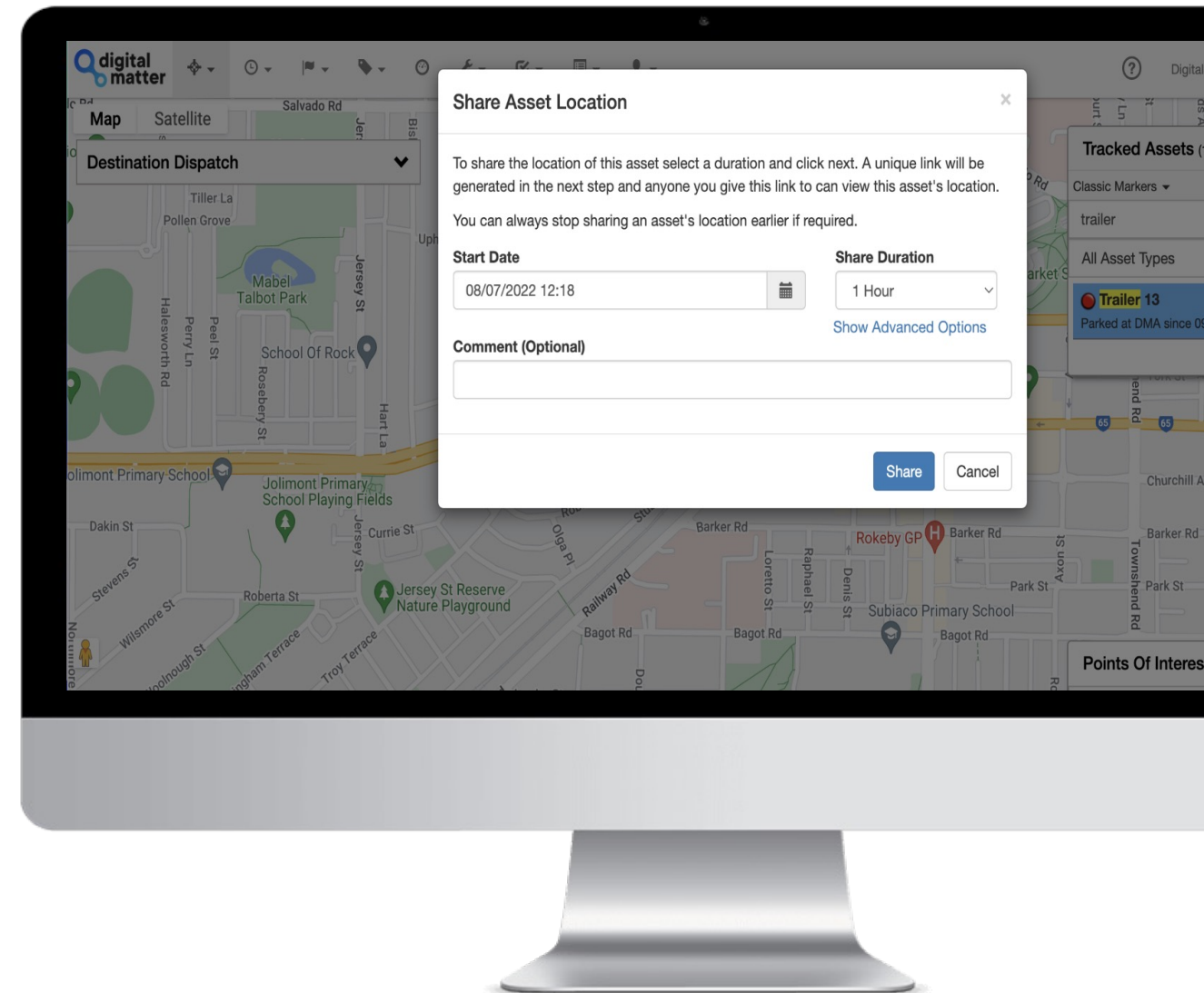
View all trips and easily mark as “Business” or “Private” to streamline log booking, Fringe Benefit Tax (FBT) and Road User Charge reporting, or to provide proof of service for accountability and invoicing.

Select from Fuel, Maintenance, Oil, Parking, and other categories to maintain an accurate record of expenses against an asset.



Asset Location Sharing

Quickly create and share a temporary link to a specific asset or group of assets to external parties (law enforcement, couriers, and more) without creating additional logins.



Location and
Recovery

Reporting and
Alerts

Safety and
Compliance

Flexibility and
Control

Billing

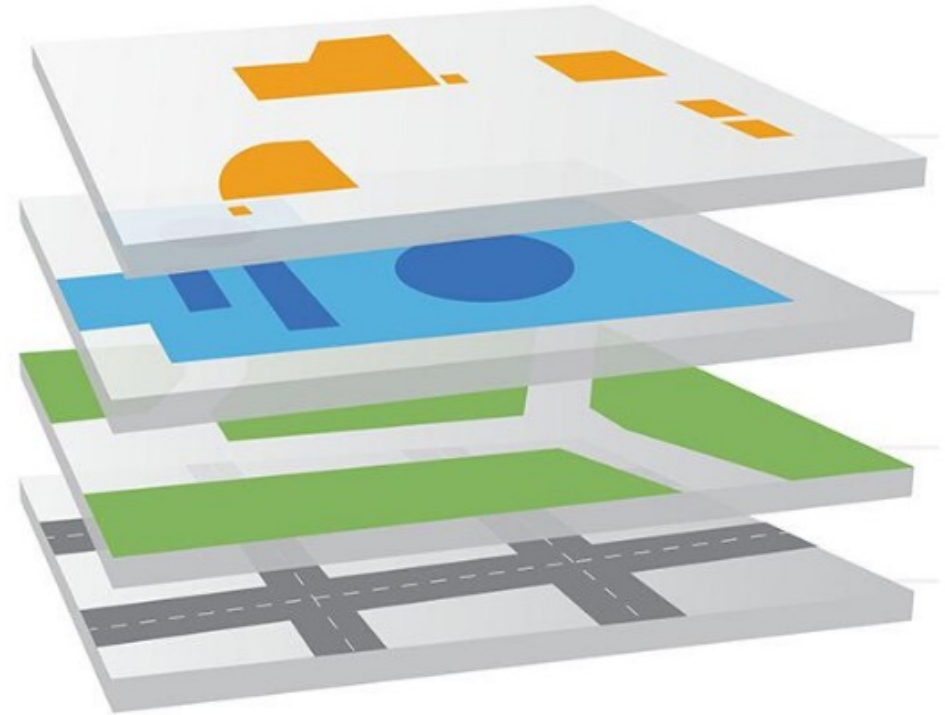
Support

Security

Add Custom Map Overlays

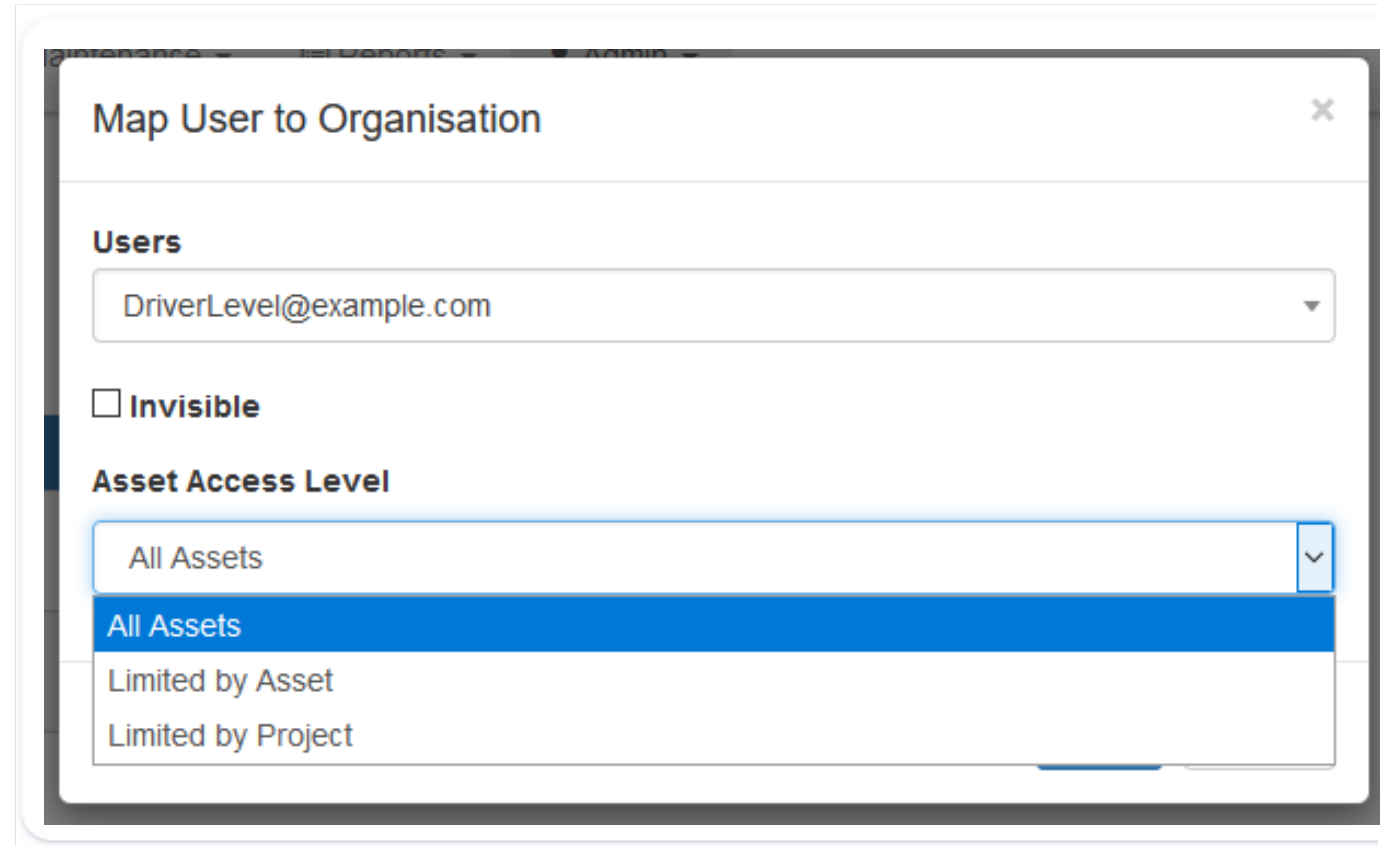
Integrate your own custom map overlays to view your assets over timely aerial images.

>> Custom Map Overlays are particularly beneficial for Construction, Oil and Gas, and Mining sites, as satellite data over these locations may be outdated.



Manage Users and Permissions

- Quickly add and invite new users
- Create and assign user roles
- Manage permissions and control user access to specific features, reports and assets
- Set up Partner or Subsidiary organizations



The screenshot shows a modal window titled "Map User to Organisation" with a close button (X) in the top right corner. Inside the modal, there is a section labeled "Users" with a dropdown menu currently displaying "DriverLevel@example.com". Below this is a checkbox labeled "Invisible". The next section is labeled "Asset Access Level" and contains a dropdown menu. This menu is open, showing four options: "All Assets" (which is highlighted in blue), "Limited by Asset", and "Limited by Project".

Flexible Billing Options to Maximise Value

\$

PPM

(Pay Per Message)

- Full Telematics Guru functionality including Mobile App
- Ideal for assets that report infrequently – ultra-low cost applications
- Subject to our [Fair Usage Policy](#)

\$\$

CLASSIC

- Full Telematics Guru functionality including Mobile App
- Everyday asset and vehicle tracking
- Turn-by-turn tracking

\$\$\$

PRO

- Full Telematics Guru functionality including Mobile App
- Asset and vehicle tracking with enhanced speed monitoring
- TomTom Speed by Road – returns the posted speed limit for each position and allows for posted speed violation reporting



Unbeatable Global Support

Derive maximum value from Telematics Guru by exploring our extensive knowledge base or speak directly with our team of technical support engineers for guidance!



Location and
Recovery

Reporting and
Alerts

Safety and
Compliance

Flexibility and
Control

Billing

Support

Security

Uptime

Telematics Guru has an uptime of 99.99% across all instances, achieved through meticulous design focused on performance, resilience and security.

Resilient Architecture

Telematics Guru is architected to fully leverage the advantages of the cloud.

High Availability - High server uptime and no downtime required for scaling up

Security - Cloud provider guidance and infrastructure best practices

Resilience - Against changing or ageing infrastructure, data loss and disasters

Scalability - Provides the ability to adapt quickly to changing demand

Technology - Leveraging the latest technologies enables quicker innovation

Geographic Location - Cloud provider data centres in every region to provide low latency and high throughput

Compliance - An instance in your region means your data does not leave your region, ensuring legislative data compliance

For more information or specific documentation please contact your local Digital Matter sales or support team.

Security

Security is of the highest concern with the following measures employed to ensure you remain protected:

- Multi-Factor Authentication
- Network Transport Encryption (TLS (Transport Layer Security) 1.2 or higher)
- Application & Data security
- Access and Authorisation (following principle of least privilege and separation of duties)
- Regular Infrastructure Security updates
- Frequent Vulnerability testing

Compliance

Data security and data governance are applied diligently. Customers are in control of their data. Transparency is promoted, and data is not monetised. Strict controls are applied to ensure safety, and data is only used for the purpose of providing the service to the customer. Data correction and deletion requests are handled in a formal controlled manner.

Microsoft
Partner



Gold Application Development
Gold Application Integration





Let's Talk Tracking

Get the technology, tools, and support you need to grow your business.

Phone 1300 246 346

Email sales@gofinder.net

Website www.gofinder.net

Gofinder partners with Digital Matter, a leading global designer and developer of low-power GPS and IoT hardware for asset tracking and management applications. Engineered to outperform, we offer a versatile range of LPWAN asset tracking hardware with the largest portfolio of integration-ready battery-powered asset tracking devices across a range of connectivity technologies.

With over 20 years of telematics experience and over 500 channel partners across 120 countries, Gofinder and Digital Matter supply and support scalable, and secure devices for Telematics Businesses, IoT Solution Providers, Enterprises and Network Operators around the world.

2022 Digital Matter Pty Ltd with Gofinder Pty Ltd. This document is provided "as-is." Information and views expressed in this document, including URL and other website or software references, may change without notice. Explore more solutions at www.digitalmatter.com.

